

# BG Martin

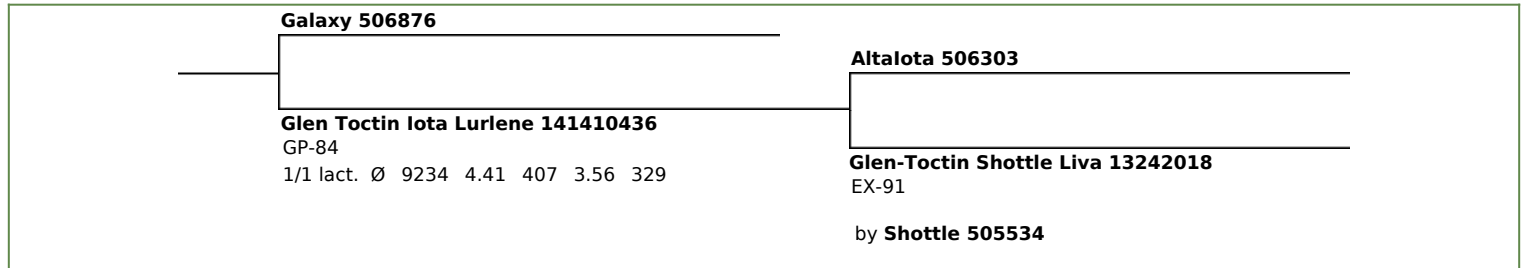
B-Casein: A2A2  
aAa: 324156

507513 BYF CVF BLF ET

born: 2013-09-21  
breeder: USA



BG Martin granddam Glen-Toctin Shottle Liva



## Breeding Value 8/2019

1. lactation	milk kg	fat %	fat kg	protein %	protein kg	gRZG <b>116</b> 75 % rel.
<b>BV:</b>	<b>+597</b>	<b>-0.07</b>	<b>+17</b>	<b>+0.06</b>	<b>+26</b>	<b>gRZM 117</b>

dairy <b>97</b>	body <b>116</b>	feet & legs <b>93</b>	udder <b>111</b>	gRZE <b>108</b> 66 % rel.
-----------------	-----------------	-----------------------	------------------	------------------------------

Trait	Extreme	Standardized Breeding Values						Extreme	
		64	76	88	100	112	124		136
Stature	small							115	tall
Dairy Character	tight rib	98							open rib
Body Depth	shallow							115	deep
Strength	frail							120	strong
Rump Angle	high pins	85							sloped
Rump Width	narrow							112	wide
Rear Leg Set / Side	steep							112	sickled
Foot Angle	low							105	steep
Hocks	swollen	95							dry
Rear Leg Set / Rear	hock-in	94							parallel
Locomotion	lame	95							good
Rear Udder	deep							105	high
Central Ligament	frail							115	strong
Teat Placement / Front	wide							127	close
Teat Placement / Rear	wide							133	close
Fore Udder Attachment	loose							111	strong
Udder Depth	deep							113	high
Teat Length	short							111	long

calving ease - sire (CEd)	<b>93</b>	milkability (RZD)	<b>102</b>	daughter fertility (RZR)	<b>101</b>
calving ease - daughter (RZKm)	<b>115</b>	somatic cells (RZS)	<b>106</b>	longevity (RZN)	<b>104</b>

total health (RZhealth)	<b>101</b>	mastitis resistance (RZudderfit)	<b>98</b>	hoof health (RZhoof)	<b>100</b>
reproduction (RZrepro)	<b>104</b>	metabolic stability (RZmetabol)	<b>107</b>	calves fitness (RZKFIt)	<b>98</b>

