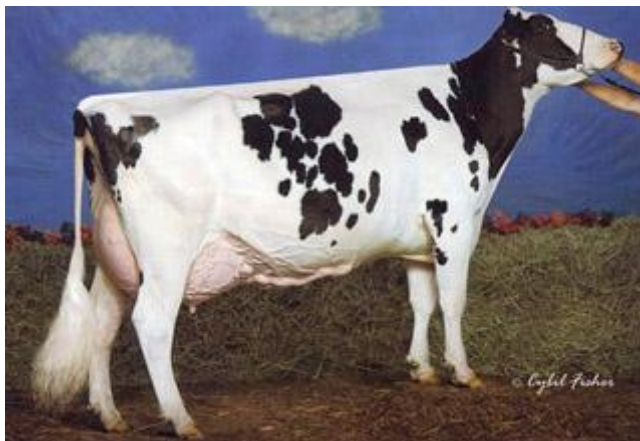


BG Manon

B-Casein: A2A2
aAa: 243156

507452 BYF CVF BLF ET

born: 2013-06-14
breeder: USA



BG Manon great granddam Juniper Outside Wish EX-95

Loren 507006	Bookem 889128
Rickland Bookem Wanda 61141661 GP-82 243 lact. Ø 9829 3.53 347 3.31 325	Juniper Laudan Whitney VG-87 by Laudan 810695

Breeding Value 8/2019							RZG 130
74 daughters			29 herds				78 % rel.
1. lactation	milk kg	fat %	fat kg	protein %	protein kg		RZM
BV:	+1217	-0.29	+18	-0.03	+37		122

53 daughters			17 herds				70 % rel.
dairy 121	body 91	feet & legs 115	udder 118				RZE 118

Trait	Extreme	Standardized Breeding Values						Extreme
		64	76	88	100	112	124	
Stature	small							102 tall
Dairy Character	tight rib							123 open rib
Body Depth	shallow	96						deep
Strength	frail	91						strong
Rump Angle	high pins	84						sloped
Rump Width	narrow	97						wide
Rear Leg Set / Side	steep							104 sickled
Foot Angle	low	95						steep
Hocks	swollen							104 dry
Rear Leg Set / Rear	hock-in							129 parallel
Locomotion	lame							108 good
Rear Udder	deep							125 high
Central Ligament	frail	99						strong
Teat Placement / Front	wide	98						close
Teat Placement / Rear	wide							105 close
Fore Udder Attachment	loose							111 strong
Udder Depth	deep							120 high
Teat Length	short	84						long

calving ease - sire (CEd)	112	milkability (RZD)	100	daughter fertility (RZR)	103
calving ease - daughter (RZKm)	92	somatic cells (RZS)	112	longevity (RZN)	117

total health (RZhealth)	112	mastitis resistance (RZudderfit)	113	hoof health (RZhoof)	105
reproduction (RZrepro)	107	metabolic stability (RZmetabol)	110	calves fitness (RZKFit)	103

