

Percey-Red RR

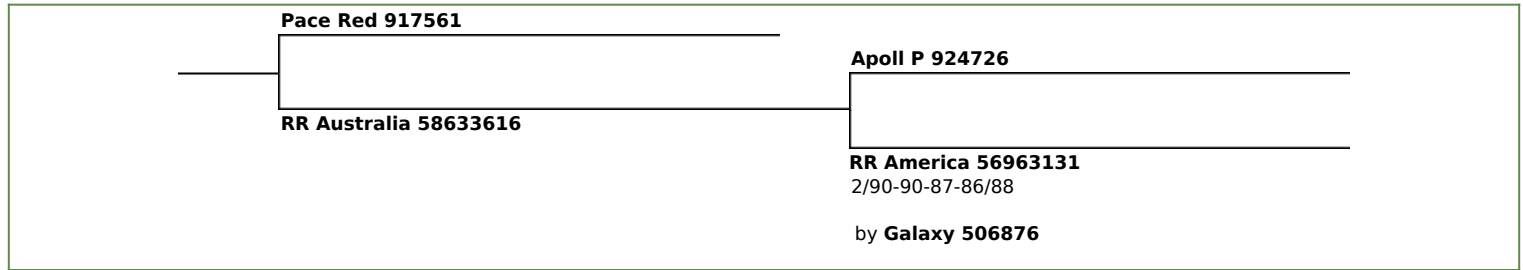
B-Casein: A2A2
aAa: 243165

265560 BYF CVF BLF CDF ET

born: 2018-03-03
breeder: Reineremann, Rüsfort



Percey-Red granddam America



Breeding Value 8/2019							gRZG 157
1. lactation	milk kg	fat %	fat kg	protein %	protein kg		73 % rel. gRZM
BV:	+2137	-0.18	+70	-0.04	+69		150

					62 % rel. gRZE 124
dairy 117	body 107	feet & legs 106	udder 128		

Trait	Extreme	Standardized Breeding Values							Extreme	
		64	76	88	100	112	124	136		
Stature	small								116	tall
Dairy Character	tight rib								114	open rib
Body Depth	shallow	98								deep
Strength	frail	97								strong
Rump Angle	high pins	99								sloped
Rump Width	narrow								111	wide
Rear Leg Set / Side	steep	92								sickled
Foot Angle	low								105	steep
Hocks	swollen								107	dry
Rear Leg Set / Rear	hock-in	98								parallel
Locomotion	lame								103	good
Rear Udder	deep								124	high
Central Ligament	frail								113	strong
Teat Placement / Front	wide								111	close
Teat Placement / Rear	wide								115	close
Fore Udder Attachment	loose								116	strong
Udder Depth	deep								118	high
Teat Length	short								101	long

calving ease - sire (CEd)	111	milkability (RZD)	102	daughter fertility (RZR)	97
calving ease - daughter (RZKm)	112	somatic cells (RZS)	117	longevity (RZN)	127

total health (RZhealth)	116	mastitis resistance (RZudderfit)	115	hoof health (RZhoof)	112
reproduction (RZrepro)	107	metabolic stability (RZmetabol)	111	calves fitness (RZKFit)	106

