

Mix-Red PP

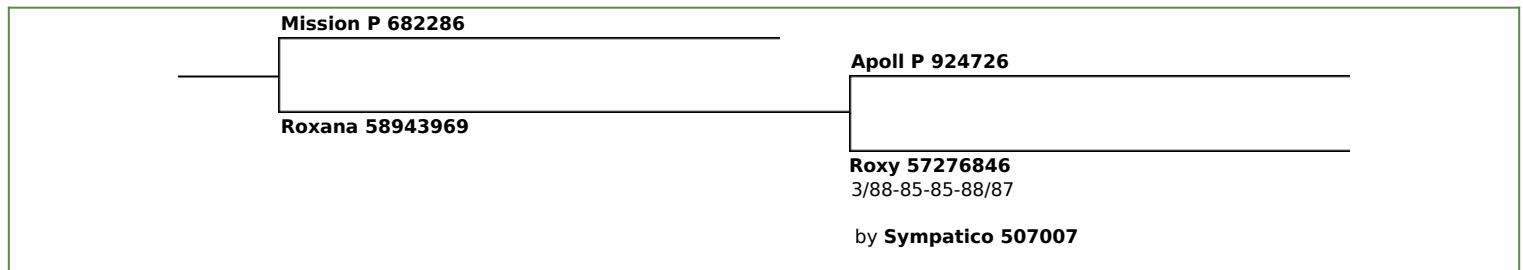
K-Casein: BB
aAa: 234165

265393 PP BYF CVF BLF CDF ET

born: 2017-09-16
breeder: Klowersa, Kl. Bokern



Mix-Red PP granddam Roxy



Breeding Value 8/2019

1. lactation	milk kg	fat %	fat kg	protein %	protein kg	gRZG 142 73 % rel.
BV:	+1739	-0.06	+66	-0.02	+58	gRZM 144

dairy 118	body 99	feet & legs 108	udder 119	gRZE 117 63 % rel.
------------------	----------------	------------------------	------------------	------------------------------

Trait	Extreme	Standardized Breeding Values						Extreme
		64	76	88	100	112	124	
Stature	small							108 tall
Dairy Character	tight rib							118 open rib
Body Depth	shallow							101 deep
Strength	frail	96						strong
Rump Angle	high pins							112 sloped
Rump Width	narrow	93						wide
Rear Leg Set / Side	steep							112 sickled
Foot Angle	low	98						steep
Hocks	swollen							112 dry
Rear Leg Set / Rear	hock-in							101 parallel
Locomotion	lame							109 good
Rear Udder	deep							118 high
Central Ligament	frail							112 strong
Teat Placement / Front	wide							123 close
Teat Placement / Rear	wide							137 close
Fore Udder Attachment	loose							119 strong
Udder Depth	deep							111 high
Teat Length	short	98						long

calving ease - sire (CEd)	105	milkability (RZD)	96	daughter fertility (RZR)	83
calving ease - daughter (RZKm)	101	somatic cells (RZS)	109	longevity (RZN)	114

total health (RZhealth)	102	mastitis resistance (RZudderfit)	100	hoof health (RZhoof)	108
reproduction (RZrepro)	98	metabolic stability (RZmetabol)	96	calves fitness (RZKFit)	107

