

# Suprem

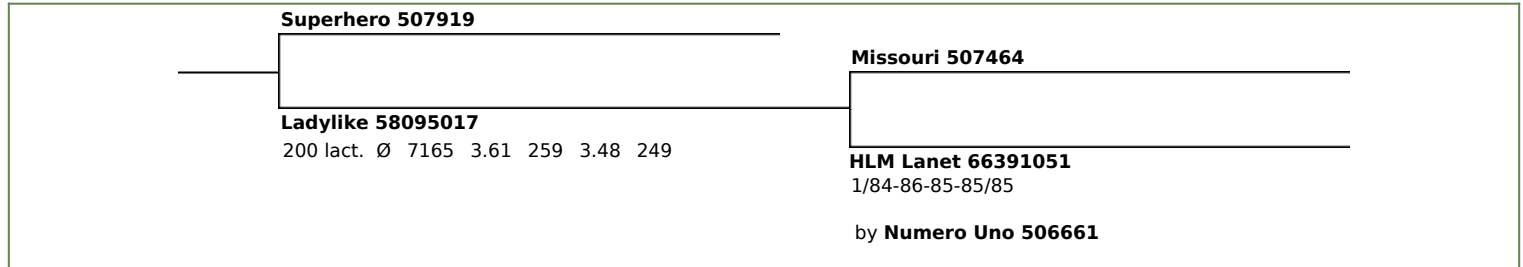
265155 BYF CVF BLF CDF ET

born: 2017-05-13  
breeder: PrismaGen GmbH, Altenberge

B-Casein: A2A2  
K-Casein: BB  
aAa: 342516



Suprem fullsister WKM Lady



## Breeding Value 8/2019

1. lactation	milk kg	fat %	fat kg	protein %	protein kg	gRZG
<b>BV:</b>	<b>+2597</b>	<b>-0.07</b>	<b>+94</b>	<b>-0.07</b>	<b>+79</b>	<b>163</b> 74 % rel. gRZM <b>161</b>

dairy <b>113</b>	body <b>114</b>	feet & legs <b>110</b>	udder <b>107</b>	gRZE <b>115</b> 63 % rel.
------------------	-----------------	------------------------	------------------	------------------------------

Trait	Extreme	Standardized Breeding Values						Extreme	
		64	76	88	100	112	124		136
Stature	small							110	tall
Dairy Character	tight rib							112	open rib
Body Depth	shallow							105	deep
Strength	frail							105	strong
Rump Angle	high pins	85							sloped
Rump Width	narrow							132	wide
Rear Leg Set / Side	steep							110	sickled
Foot Angle	low	97							steep
Hocks	swollen							107	dry
Rear Leg Set / Rear	hock-in							106	parallel
Locomotion	lame							109	good
Rear Udder	deep							112	high
Central Ligament	frail							117	strong
Teat Placement / Front	wide							105	close
Teat Placement / Rear	wide							119	close
Fore Udder Attachment	loose							100	strong
Udder Depth	deep	97							high
Teat Length	short							118	long

calving ease - sire (CEd)	<b>95</b>	milkability (RZD)	<b>99</b>	daughter fertility (RZR)	<b>111</b>
calving ease - daughter (RZKm)	<b>118</b>	somatic cells (RZS)	<b>115</b>	longevity (RZN)	<b>121</b>

total health (RZhealth)	<b>111</b>	mastitis resistance (RZudderfit)	<b>107</b>	hoof health (RZhoof)	<b>109</b>
reproduction (RZrepro)	<b>112</b>	metabolic stability (RZmetabol)	<b>107</b>	calves fitness (RZKFit)	<b>103</b>

